

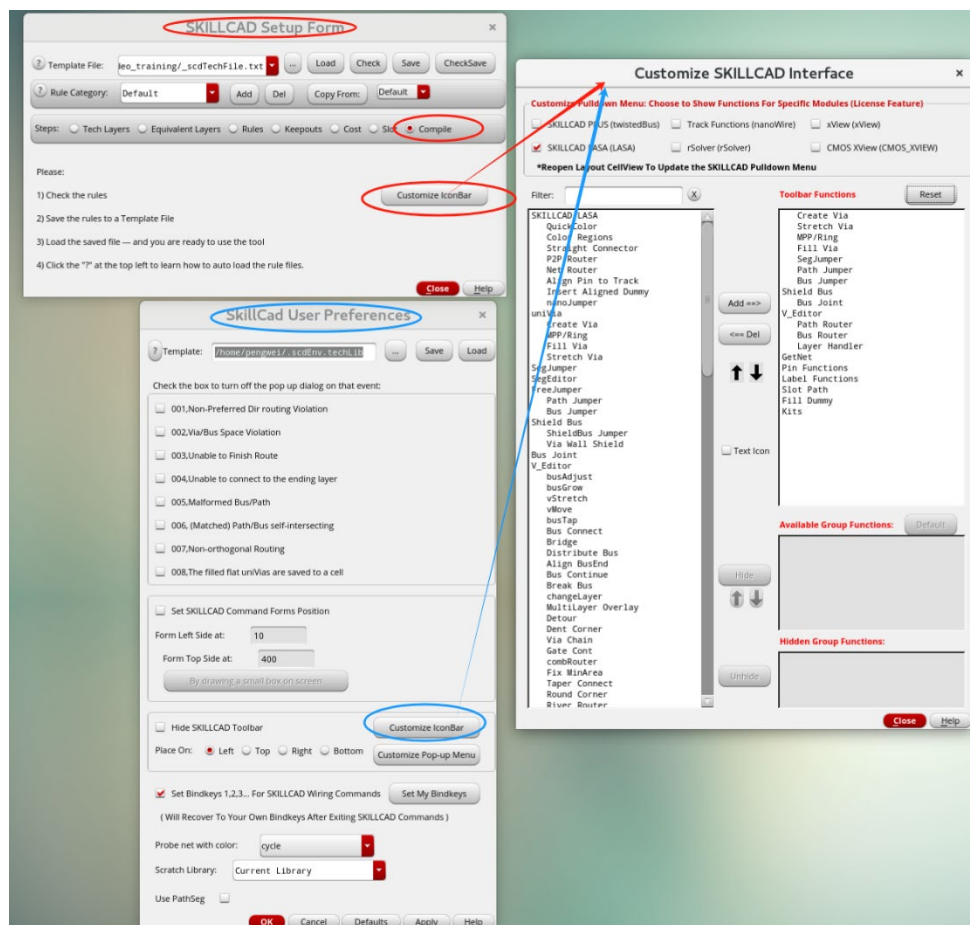
# Release Notes for SKILLCAD

## SKILLCAD V5.0 Main Improvements

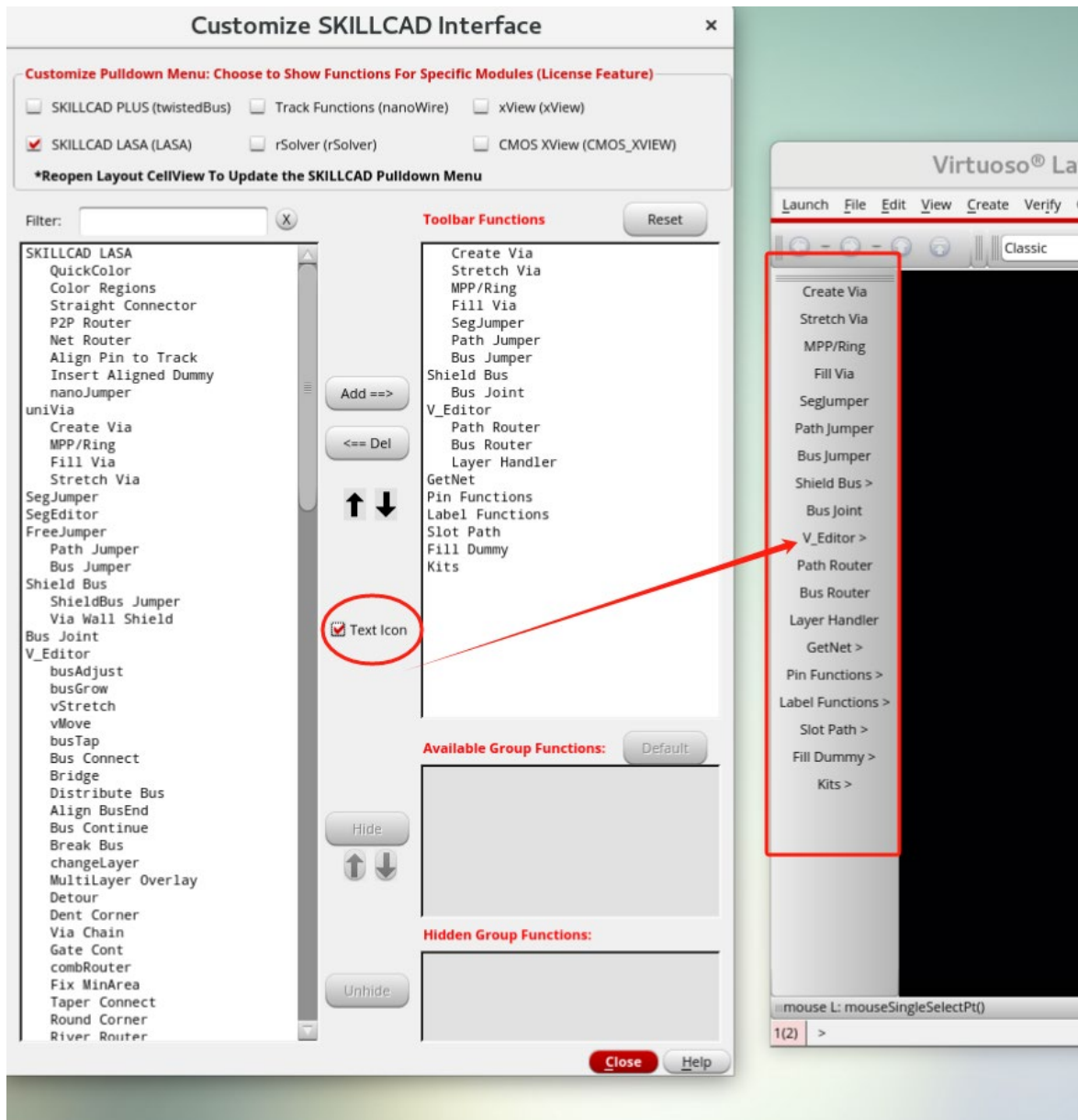
[http://skillcad.com/download\\_tool.html](http://skillcad.com/download_tool.html)

### 1) New Interface for Customizing the SKILLCAD Menu and Toolbar

A new interface allows users to customize the SKILLCAD pulldown menu and toolbar by removing commands that do not have a SKILLCAD license. End users can flexibly configure the toolbar and organize functions within each command group to suit their workflow.



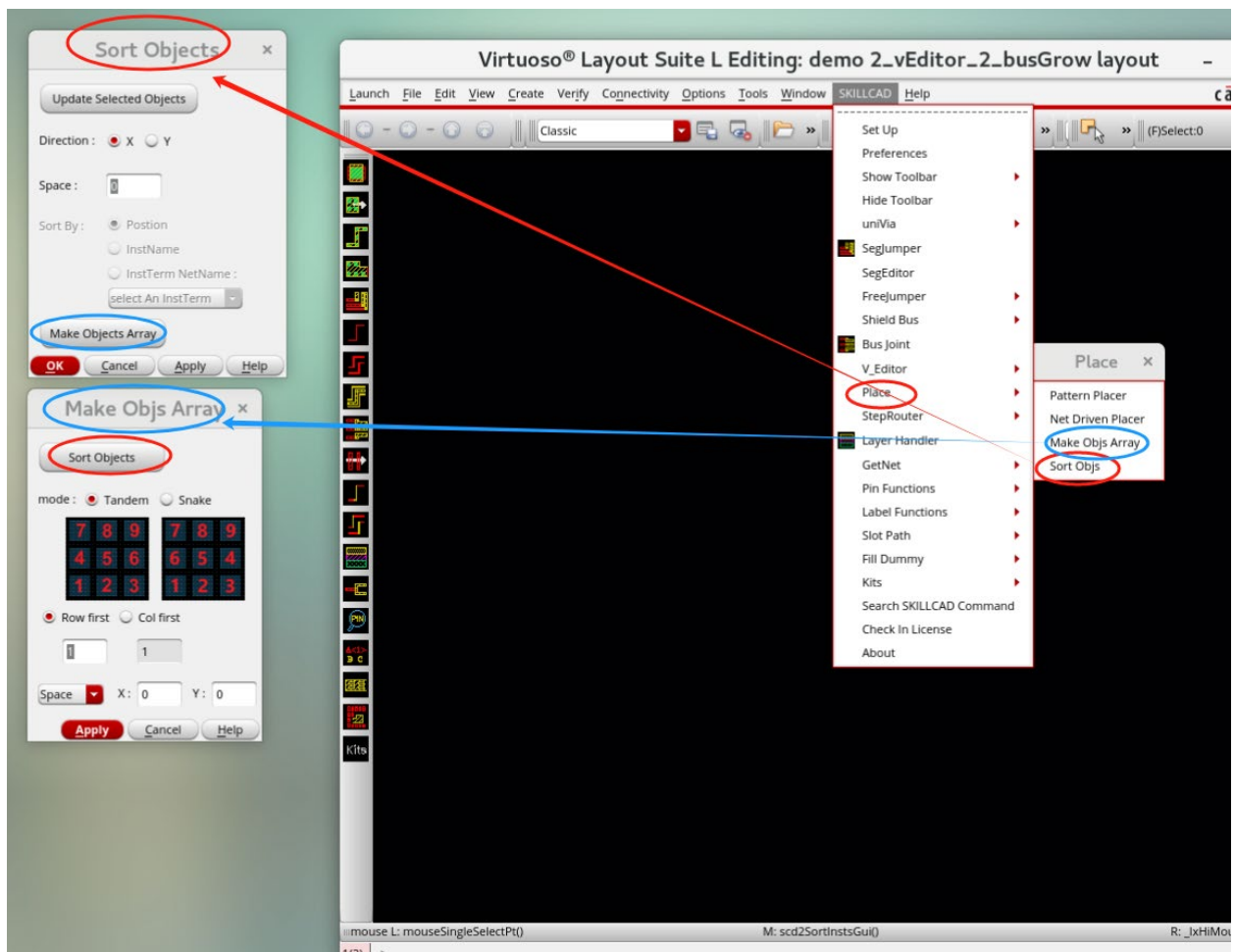
The updated UI introduces a “Text Icon” toolbar option, reducing confusion caused by similar icons for commands with related functions.



## 2) New commands:

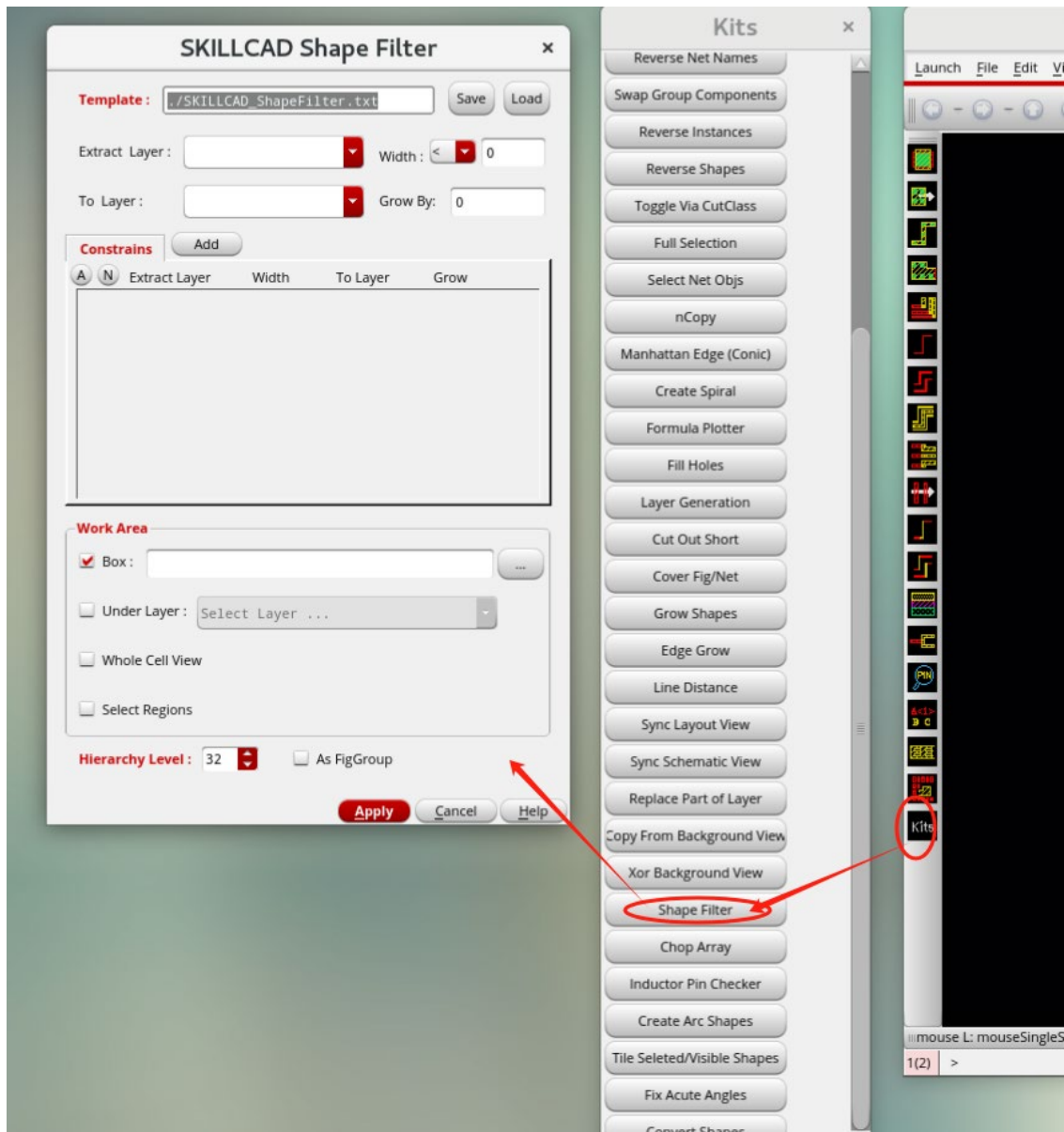
### i) Sort Objs and Make Objs Array (Place-> Sort Objs)

The command quickly sorts objects by position, instance name, or the net name of an instTerm and arranges them in an array using either Tandem or Snake order.



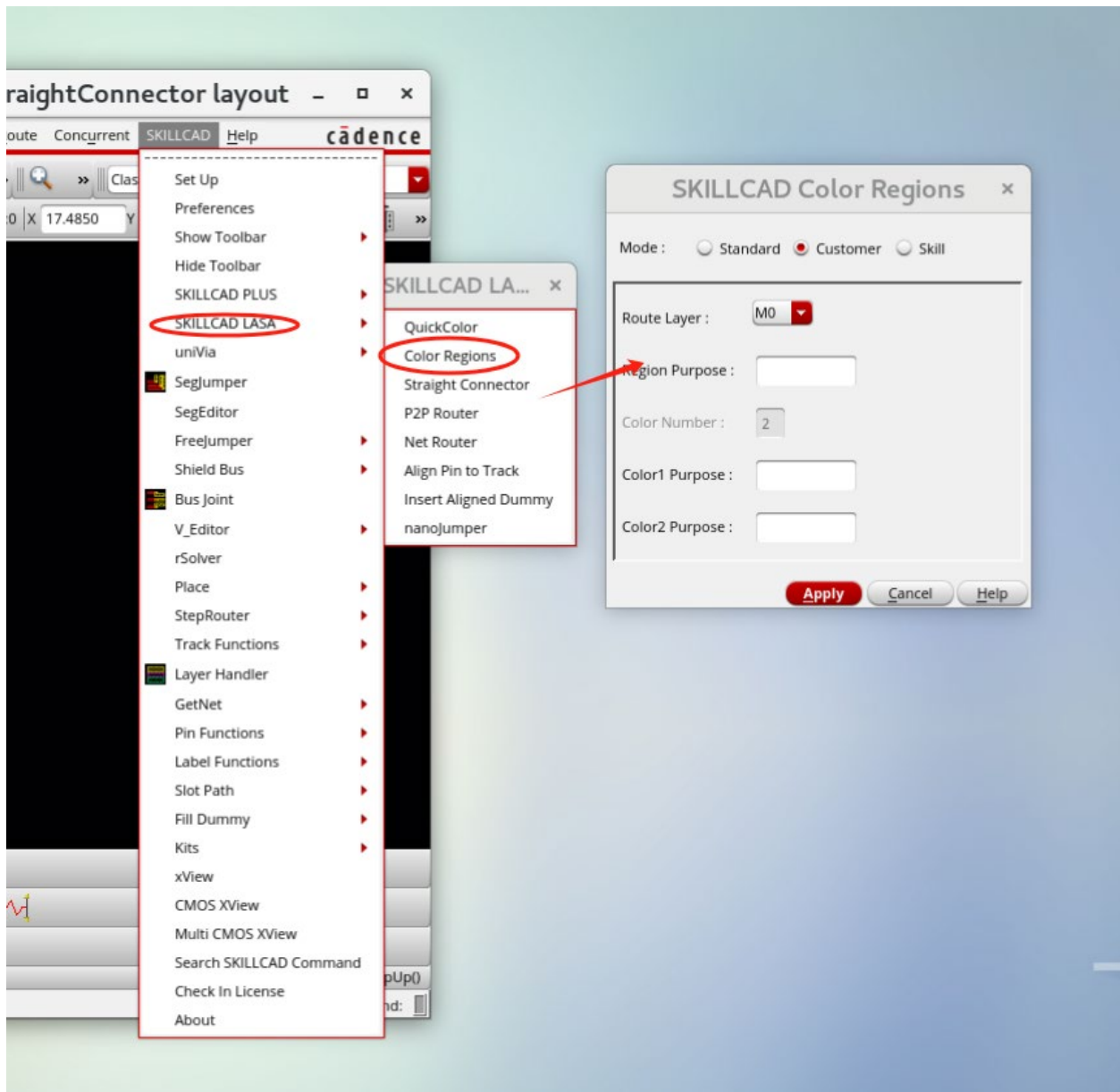
## ii) Shape Filter (Kits->Shape Filter)

Extract shapes or nets based on wire width. This is particularly useful for identifying high-speed (wider) wires and creating blockage shapes for dummy fill or other operations that require special consideration for high-speed nets.



### iii) Color Regions (SKILLCAD LASA-> Color Regions)

Quickly color metal wires in selected regions using the standard Cadence method, a custom method, or a generic SKILL mode.



3) UI improvement on rSolver

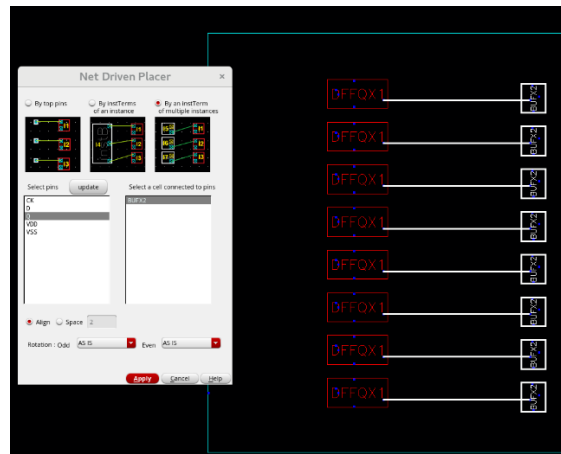
4) Several Minor Bug fixes

# Release Notes for SKILLCAD

## SKILLCAD V4.8.5 Main Improvements

### 1) New Function: **Net Driven Placer (SKILLCAD->Place-> Net Driven Placer)**

Select/Place instances based on pin/instTerm connections. This function replaced/combined **Select Insts By Connected Pins**, **Select Insts By InstTerms** and **place by Pin Connectivity** Three functions.



### 2) New Function: **Align Pin To Track (SKILLCAD->SKILLCAD LASA -> Align Pin to Track)**

Move Align Pins to WSP, track pattern or routing grid

